

MAY 2024

---

# Mobile Operator and SCADA Anywhere

An introduction to the mobile operator and remote access solutions of the AVEVA portfolio

Presented by: Elkansa Kousa

# What does “Mobile Operator” and “remote access” mean to you?

## Different definitions for different people!

- Is it an operator that performs rounds to check on assets?
- Is it a SCADA engineer who needs to remotely control your process?
- Is it an executive who just needs remote dashboarding capabilities?
  
- Does this person need monitor and control capabilities? Or monitoring only?
- Do they need access to trends, alerts, mobile procedures, or other functionality?

# What are our “mobile operator” and remote access solutions?

There are many!

- AVEVA Mobile Operator Rounds
- Limble CMMS
- AVEVA Historian Client
- AVEVA Insight
- AVEVA PI Vision
- AVEVA InTouch and OMI:
  - InTouch Access Anywhere and InTouch Web Client
  - OMI Web Client
- AVEVA Edge Thin Clients
  
- And many more!

# Mobile Operator Rounds

## Mobile – Rounds & procedures

- Field user is presented with a list of tasks
- Using defined pick lists
- Device/Virtual keyboard
- Peripherals



WiFi 45% 7:27 PM

← Blower #2 ✓ ⋮

Asset: Blower2

✓ Record the blower inlet vacuum.  
-12

✓ Record the blower flow rate.  
762

☑ Record the blower discharge pressure.  
Type Here

☑ Record the blower outlet temp.  
Type Here

☑ Record the blower run time.  
Type Here hr/s ⓘ

★ See De...

< ☎ ☑ >

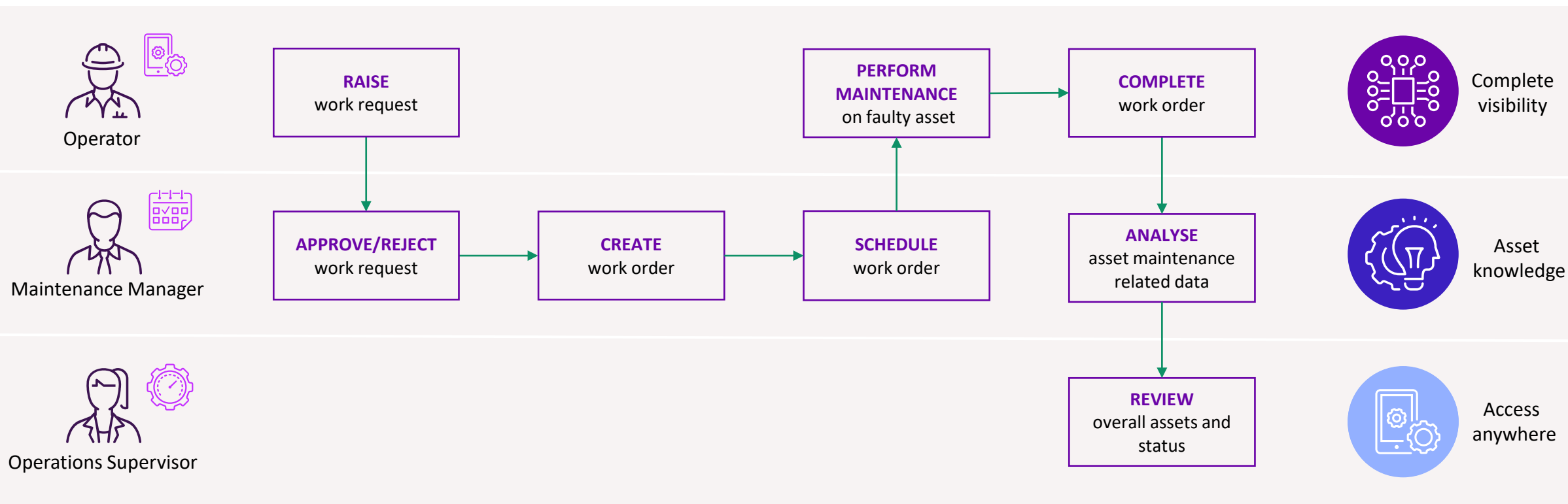
- + , 1 2 3 ☒

\* / . 4 5 6 →

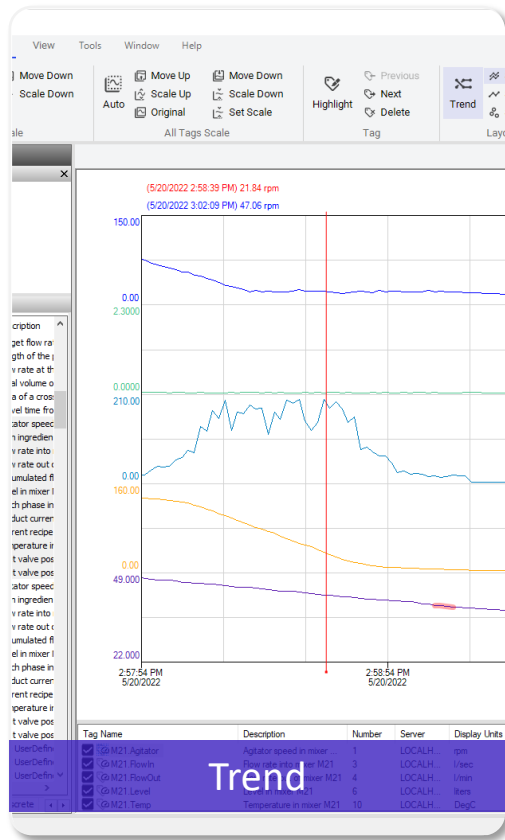
( ) = 7 8 9

\_ \* 0 #

# Improving Maintenance Management with Limble CMMS



# AVEVA Historian Client



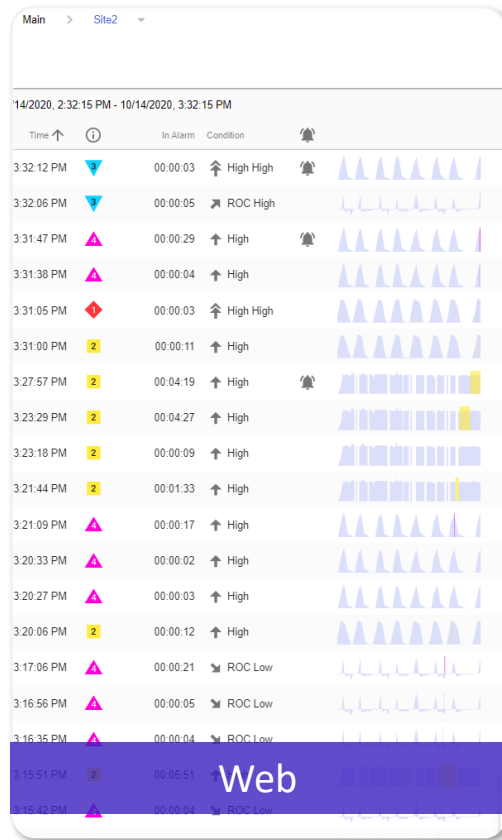
**Query**

Columns

- Tag Name
- Description
- SourceTag
- SourceServer
- EndDateTime
- OPC Quality
- PercentGood
- First
- FirstDateTime
- Last
- LastDateTime
- Minimum
- MinDateTi
- Maximum
- MaxDateTi
- Average
- Standard D

Results

SQL	Data
TagName	StartDateTime
M21.Level	6/7/2022 8:00:00 AM
M21.Temp	6/7/2022 8:00:00 AM
M21.Level	6/7/2022 9:00:00 AM
M21.Temp	6/7/2022 9:00:00 AM
M21.Level	6/7/2022 10:00:00 AM
M21.Temp	6/7/2022 10:00:00 AM
M21.Level	6/7/2022 11:00:00 AM
M21.Temp	6/7/2022 11:00:00 AM



**Excel add-in**

AVEVA Historian

Periodic Numeric

Display Tag Results

Tags  
Sheet1!B3:B5

Results  
Sheet1!B20

Tag Direction  
Down Across

Time  
Time selection Cell reference

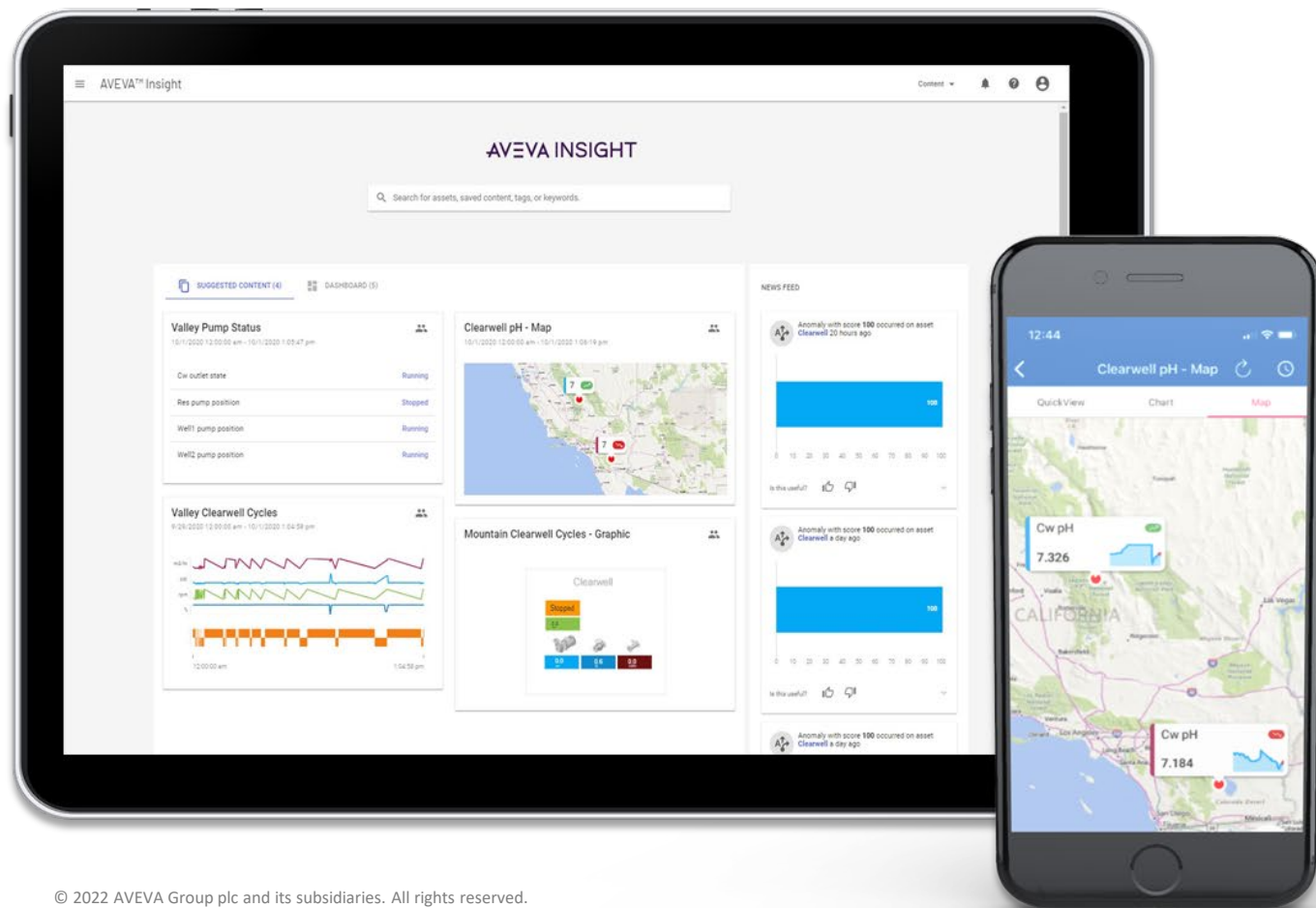
Yesterday

Start Time  
1/12/2020 12:00 AM

End Time  
1/13/2020 12:00 AM

# AVEVA Insight

Easy-to-use cloud-based solution, enabling your teams to collaboratively manage your operations and assets from anywhere, at any time



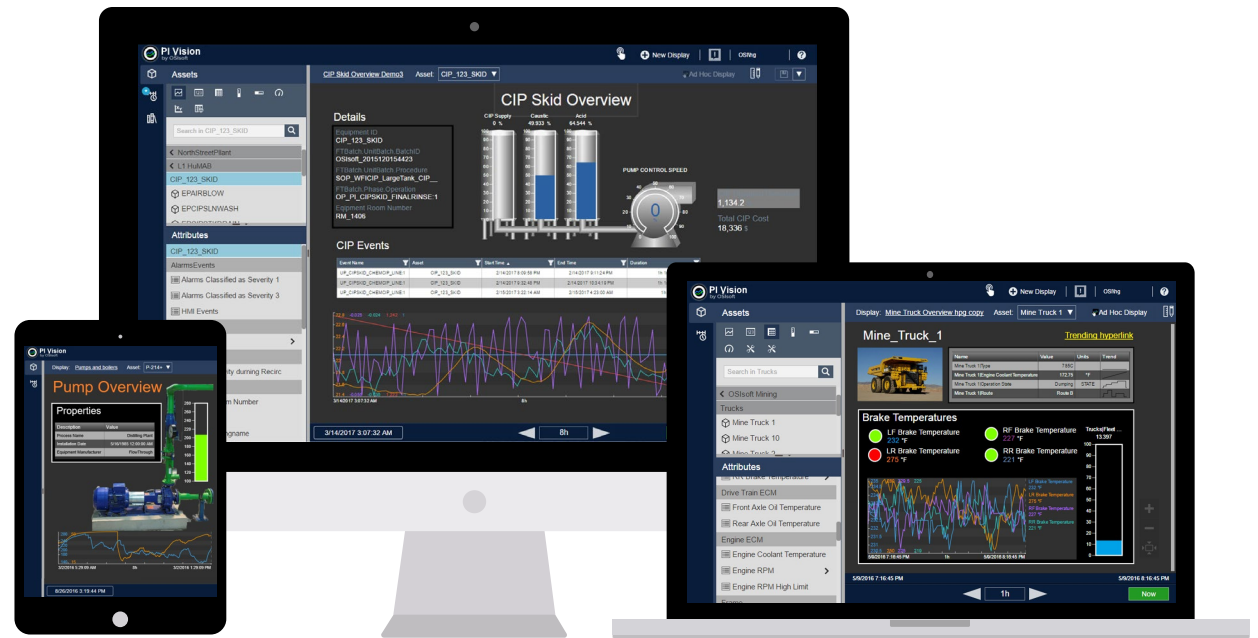
AVEVA Insight gives you easy access to actionable information in the cloud. Its no-code, self-service, fit-for-purpose analytics work for ordinary operations users—not just data scientists.

- Unlock and share critical data in the cloud
- Connect workers and increase collaboration
- Improve operational performance and asset reliability

# AVEVA™ PI Vision™

The fastest, easiest way to visualize AVEVA PI Server data

- An **easy to use, self-service, scalable** solution
- Access data from any web browser, including **mobile** device browsers
- **Organize and share** displays across your organization





# InTouch and OMI Remote Access Options

## InTouch Access Anywhere



- Access to InTouch application
- Works with InTouch and OMI
- Multi-Touch & gesture support
- RDS based
- Microsoft Server OS
- Read Write or Read Only



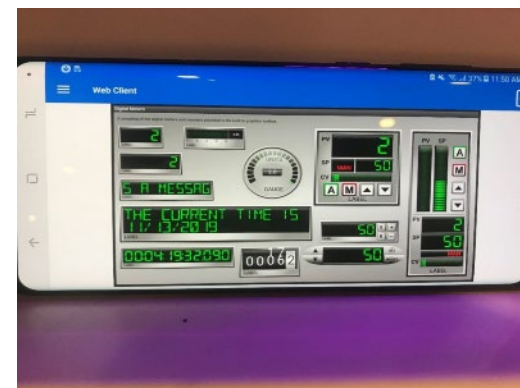
## InTouch/OMI Web Client



- Access to graphics and windows
- Works with InTouch and OMI
- Low Footprint
- Web server based
- Server or Client Microsoft OS
- Read Write or Read Only



## InTouch Mobile Apps



- iOS and Android OS
- All the benefits of Web Client in native mobile app including:
  - Secure login
  - Acknowledge Alarms
  - Write back access

# AVEVA Edge Mobility

## Native Thin Clients

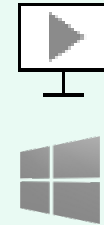
- Secure
- Portable
- Flexible
- Customizable
- Scalable:
- Interoperable

## Mobile Access Thin Client



- Plug-in free
- HTML5 interface
- Platform agnostic
- Multi-use devices

## Secure Viewer Thin Client



- Ability to prevent operator from closing or switching from the application.
- Dedicated devices (runtime-line user experience)



# CONNECT, our industrial intelligence platform

Open and neutral, providing rich data insights for your unified industrial ecosystem

