

DECEMBER 15, 2023

The Value of AVEVA in Water

Gary Wong

AVEVA Water & Wastewater Industry Principle

gary.wong@aveva.com

AVEVA

AVEVA is a leader in industrial digital transformation

CHEMICALS



49

of top 50 chemicals producers

FOOD, BEVERAGE AND CPG



All 25

of the top 25 F&B and CPG companies

INFRASTRUCTURE



3,500+

customers

MARINE



10

largest shipyards

The world's

MINING & METALS



10

of the top ten leading mining & metals companies

ENERGY



75%

of daily oil, natural gas & liquids throughput

POWER



1,000+

power plants

500,000+

MW of electricity monitored

MANUFACTURING



16,000+

manufacturing sites and smart factories

WATER AND WASTEWATER



1,400+

water customers

Shaping a Sustainable Future for Water

Enabling resiliency and sustainable management of water and sanitation for all



Optimize operations and reduce costs while keeping people healthy and safe



Improve water-use efficiency and maximize performance of ageing infrastructure



Ensure water safety and reliability while meeting regulatory compliance

WATER AND WASTEWATER



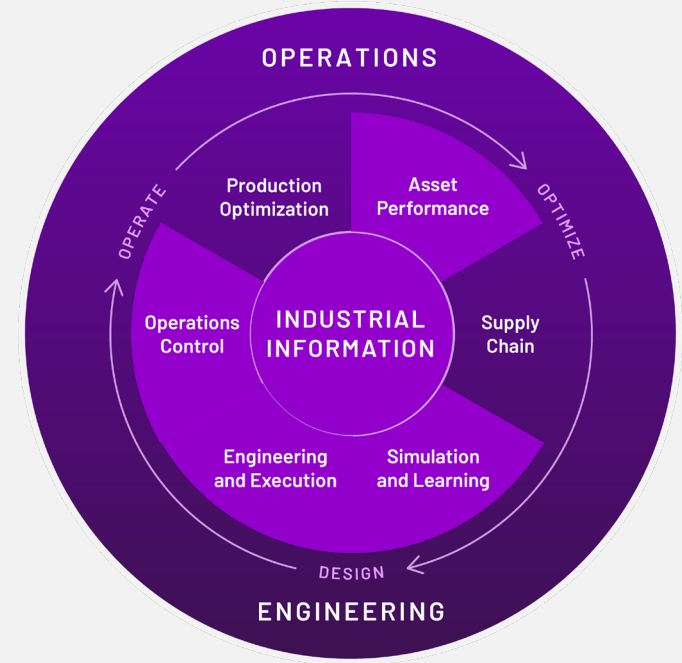
1,400+

Water customers globally



“AVEVA’s cloud-based and data-centric engineering enables our teams all around the world to work remotely, yet together, on one platform.”

Thomas Cheylan
Veolia Water Technologies



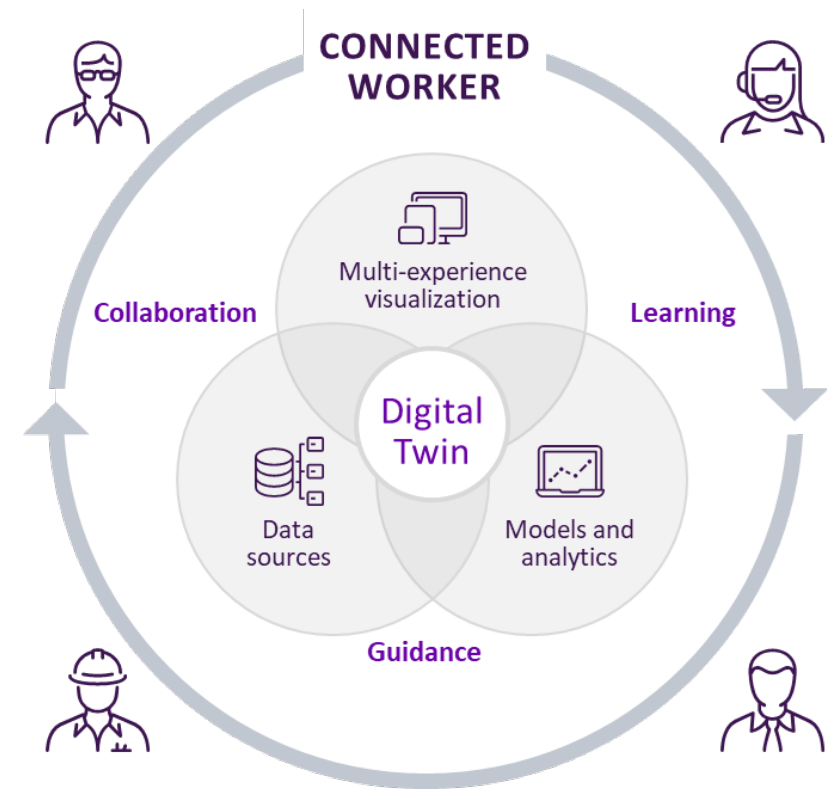
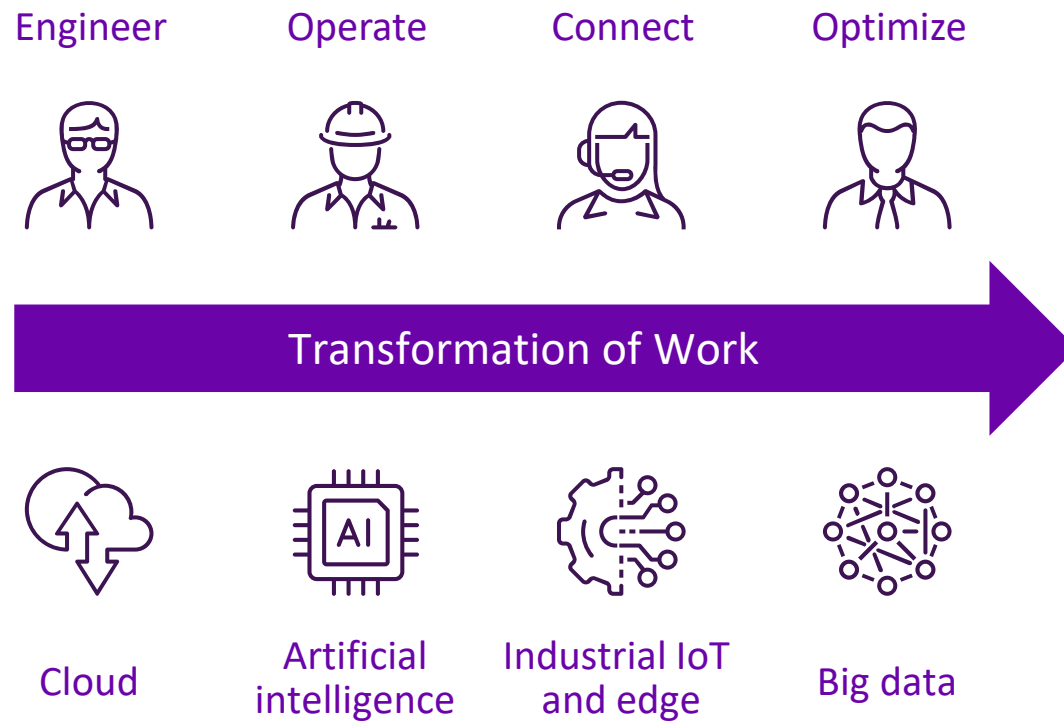
AVEVA’s biggest impact areas for sustainability within the water industry include:

- **Industrial Information**
- **Asset Performance**
- **Operations Control**

Digital Transformation: Design, Build, Operate, to Maintain

Break down silos and connect your teams with trusted information and insights

... enabled by the latest technology in a secure SaaS or hybrid cloud environment



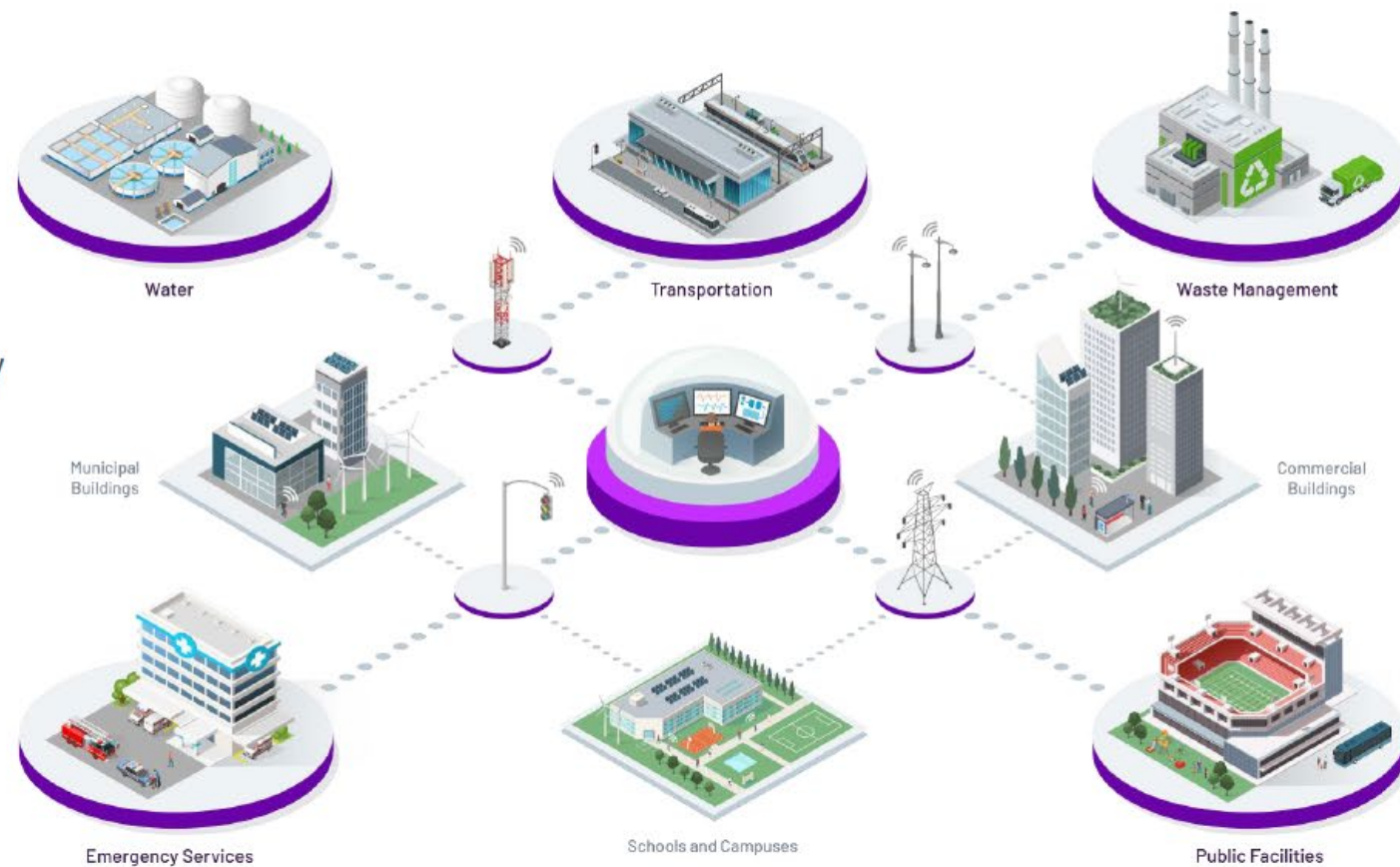
Managing our Infrastructure

Trends and Market Pressures

- Increasing Complexity of Service Networks
- Budget Constraints
- Labor Disruption
- Aging Infrastructure
- Increased Regulations and Business Discontinuity

Business Imperatives

- Operational Agility and Resiliency
- Operational Efficiency
- Transformation of Work
- Asset Reliability and Safety
- Sustainability and Net Zero



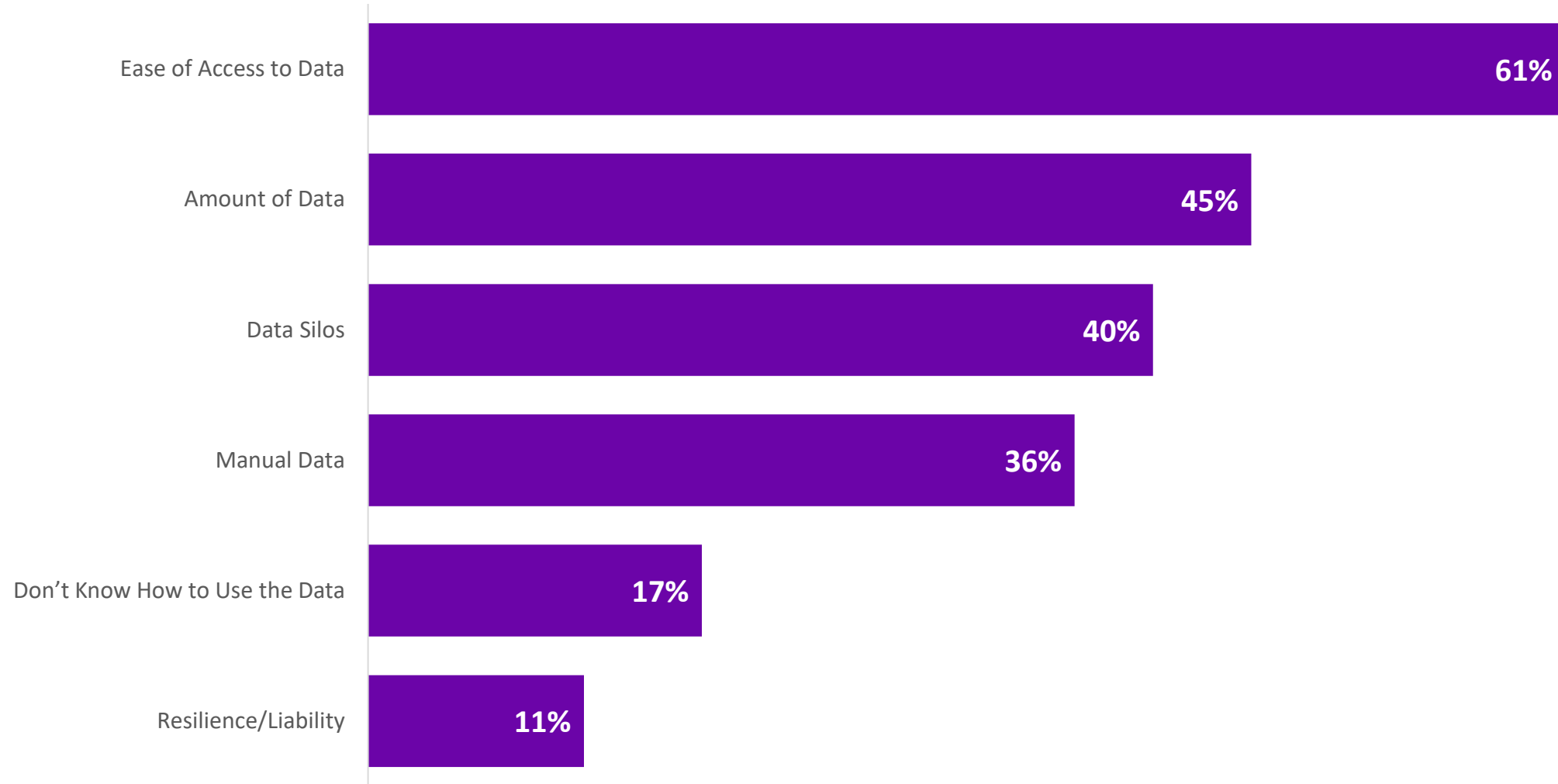
WHA Group, Thailand



- 10 subsystems including: air quality, wastewater, rainfall, remote operations, CCTV, vehicle management, water & wastewater production, solar, and building management systems
- Predictive Maintenance and Energy Optimization
- Reduced 75 tonnes of CO2 GHG emissions / year



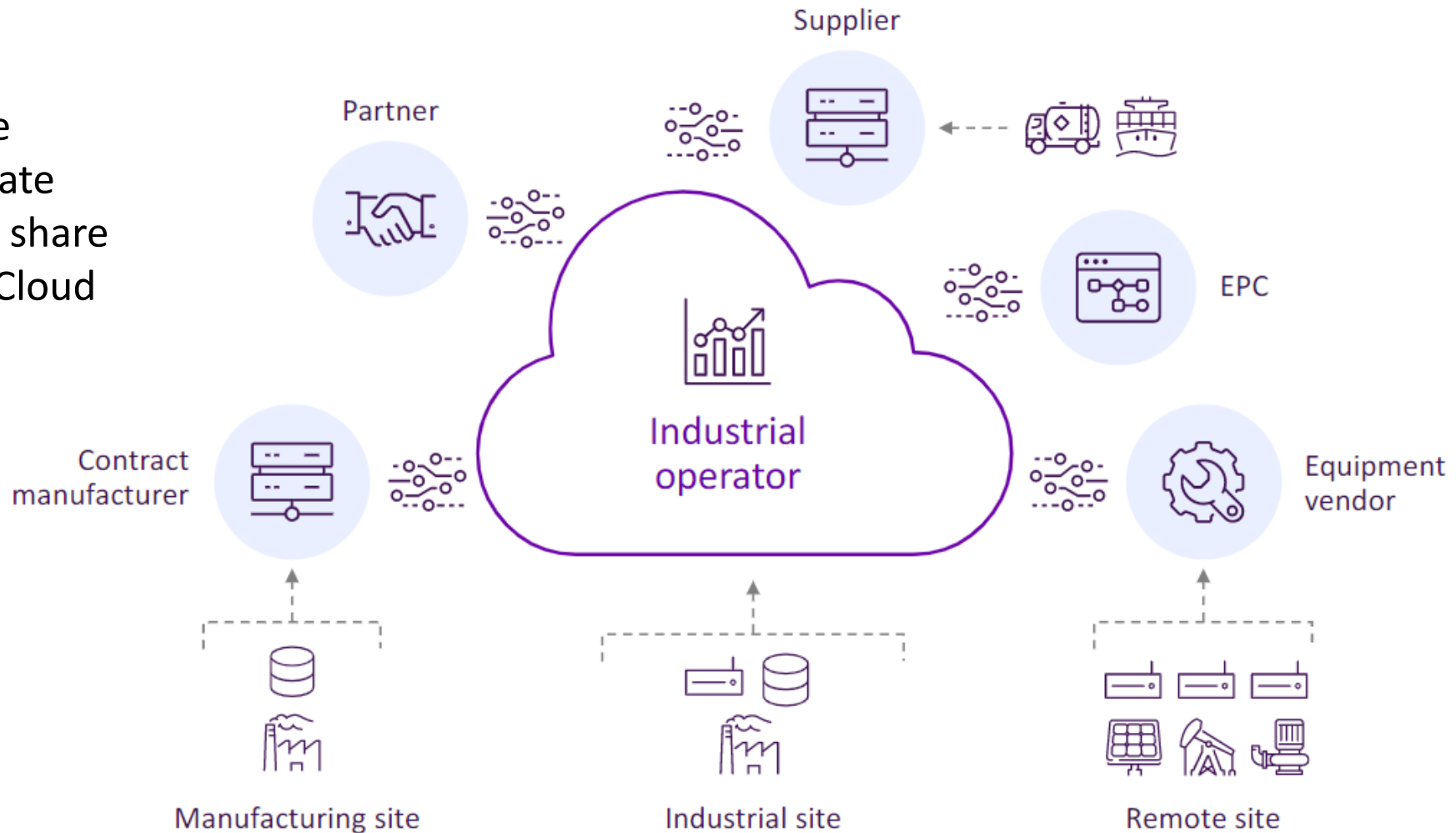
What data challenges are you or your business facing today?



Data becomes the foundation of a connected community

Data...

- Integrate
- Collaborate
- Securely share
- Edge to Cloud



Where Water Companies Find Value



Energy Efficiency

- Track Total Energy Costs and Usage
- Reduce Pumping Costs
- Forecast Water Demand
- Manage Time of Use Rates
- Leveraging Smart Water Meter Data
- Collaborate with Power Utility / Stakeholders



Process Optimization

- Keep the Utility Resilient
- Reduce Opex / Capex
- Detect and Find Leaks
- Prevent Pipe Bursts
- Reduce Infiltration
- Reduce Chemical Costs
- Forecast and Mitigate Damage from Floods / System Upsets
- Efficient Engineering



Asset Health

- Prevent Pump Failures
- Reduce Equipment Downtime
- Condition Based Maintenance of Assets
- Manage Aging Infrastructure
- Maintain Asset Performance
- Optimize Pump Schedules



Quality & Safety

- Prevent / Track Sewer Overflows
- Effluent Discharge Compliance
- Ensure Drinking Water Quality
- Detect Algae Blooms and other Anomalies
- Prevent Boil Water Advisories
- Ensure Worker Safety
- Secure Water Sources



Regulatory Reporting

- Water Quality Testing
- National Pollutant Discharge Elimination System (NPDES) Reporting
- Operational KPIs
- Monthly Compliance Reports